

SAT : INSAT-3D IMG

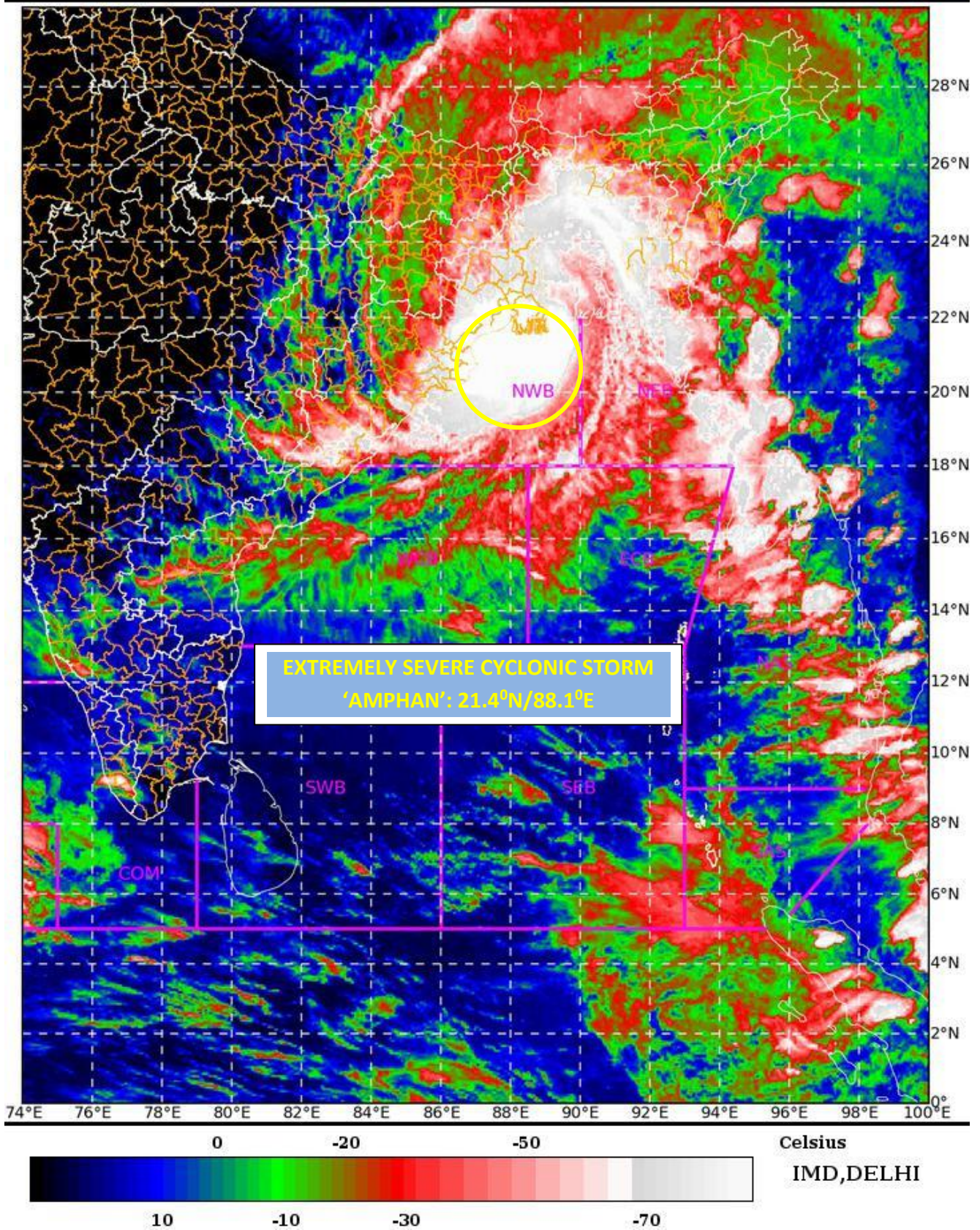
20-05-2020/(1000 to 1026) GMT

IMG_TIR1_TEMP 10.8 um

20-05-2020/(1530 to 1556) IST

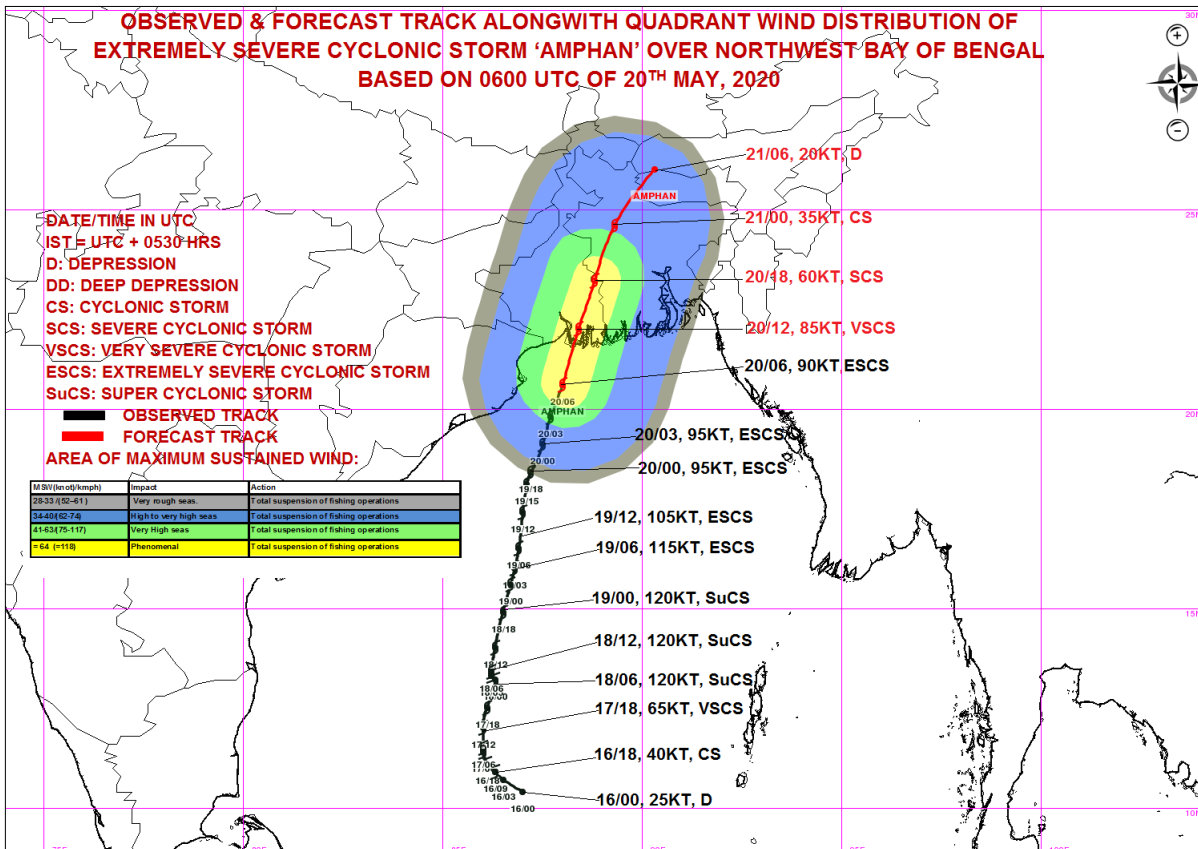
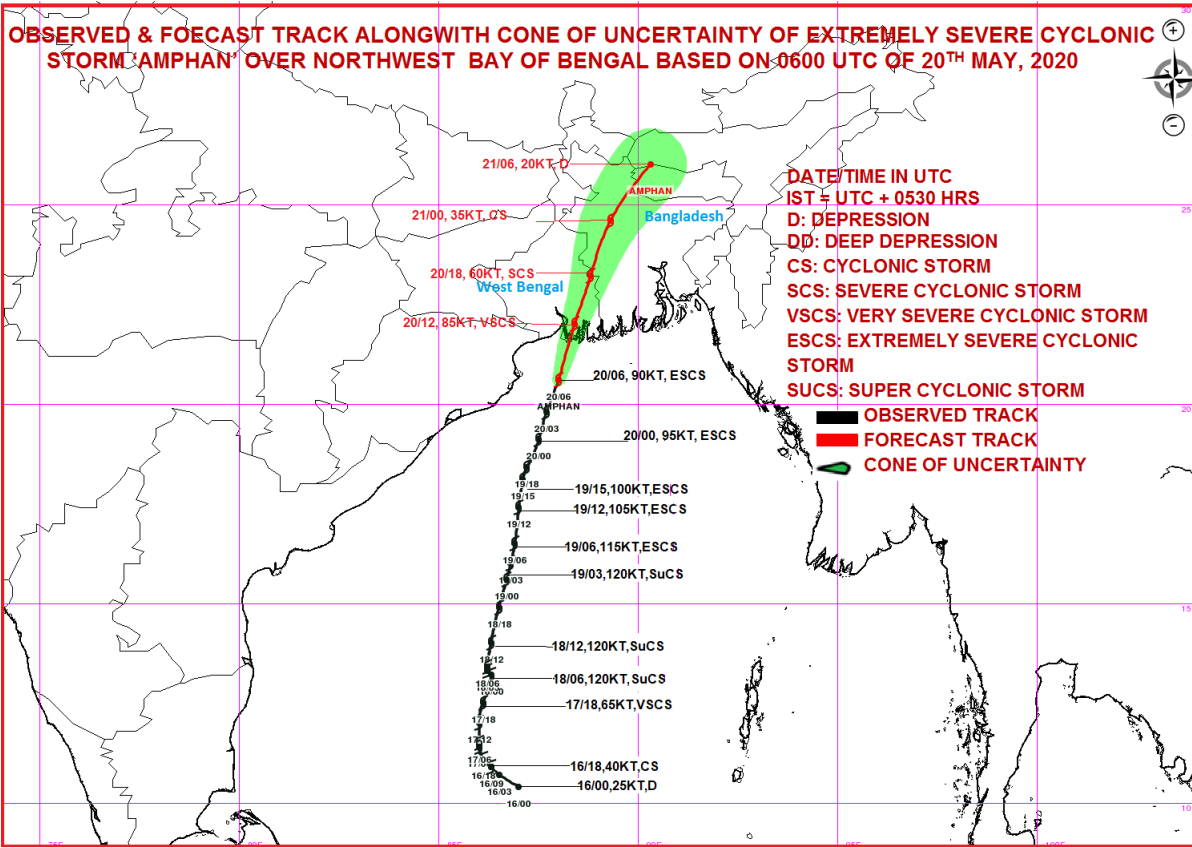


L1C Mercator



Legend: WCB – Westcentral Bay of Bengal
NWB – Northwest Bay of Bengal

Spatial rainfall distribution: Isolated: <25%, A few: 26-50%, Many: 51-75%, Most: 76-100%
Rainfall amount (mm): Heavy rain: 64.5 – 115.5, Very heavy rain: 115.6 – 204.4, Extremely heavy rain: 204.5 or more.



Spatial rainfall distribution: Isolated: <25%, A few: 26-50%, Many: 51-75%, Most: 76-100%
Rainfall amount (mm): Heavy rain: 64.5 – 115.5, Very heavy rain: 115.6 – 204.4, Extremely heavy rain: 204.5 or more.

Figure: Storm Surge forecast from INCOIS issued at 1500 IST of 20th May 2020

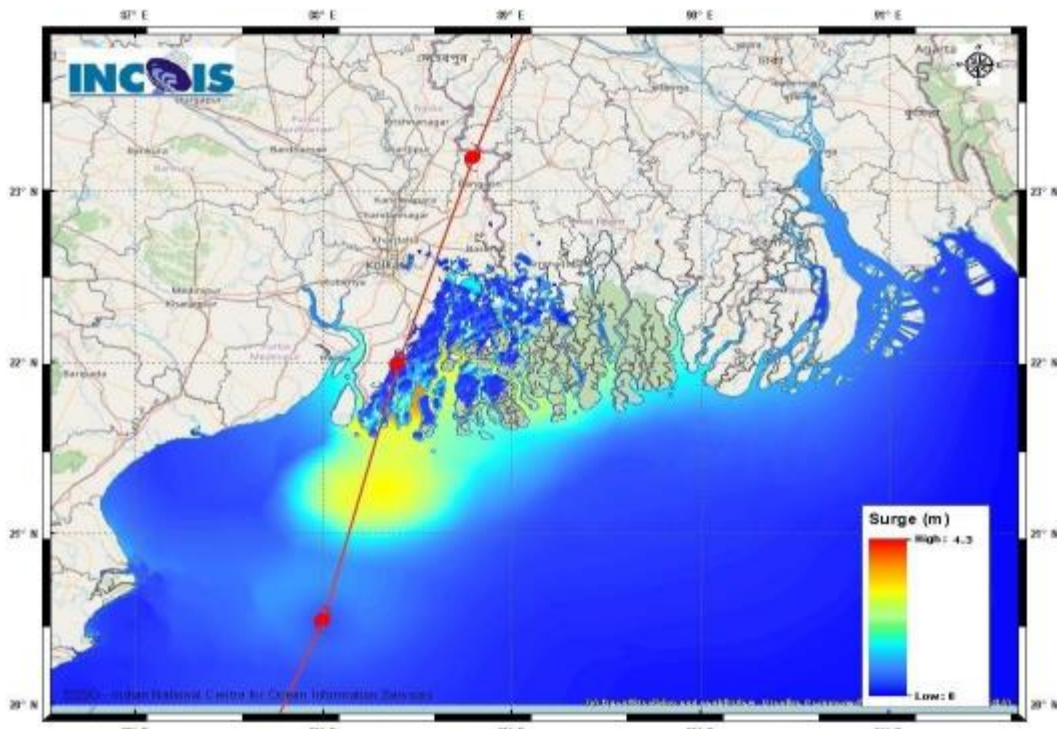


Fig: Computed storm surge & Inundation based on the IMD track forecast

Storm Surge of about 4-5 meters above Astronomical Tide is likely to inundate low lying areas of south & north 24 Parganas and about 3-4 meters over the low lying areas of East Medinipur District of West Bengal during the time of Landfall. Given below is the direct model output from INCIOS Strom Surge model.

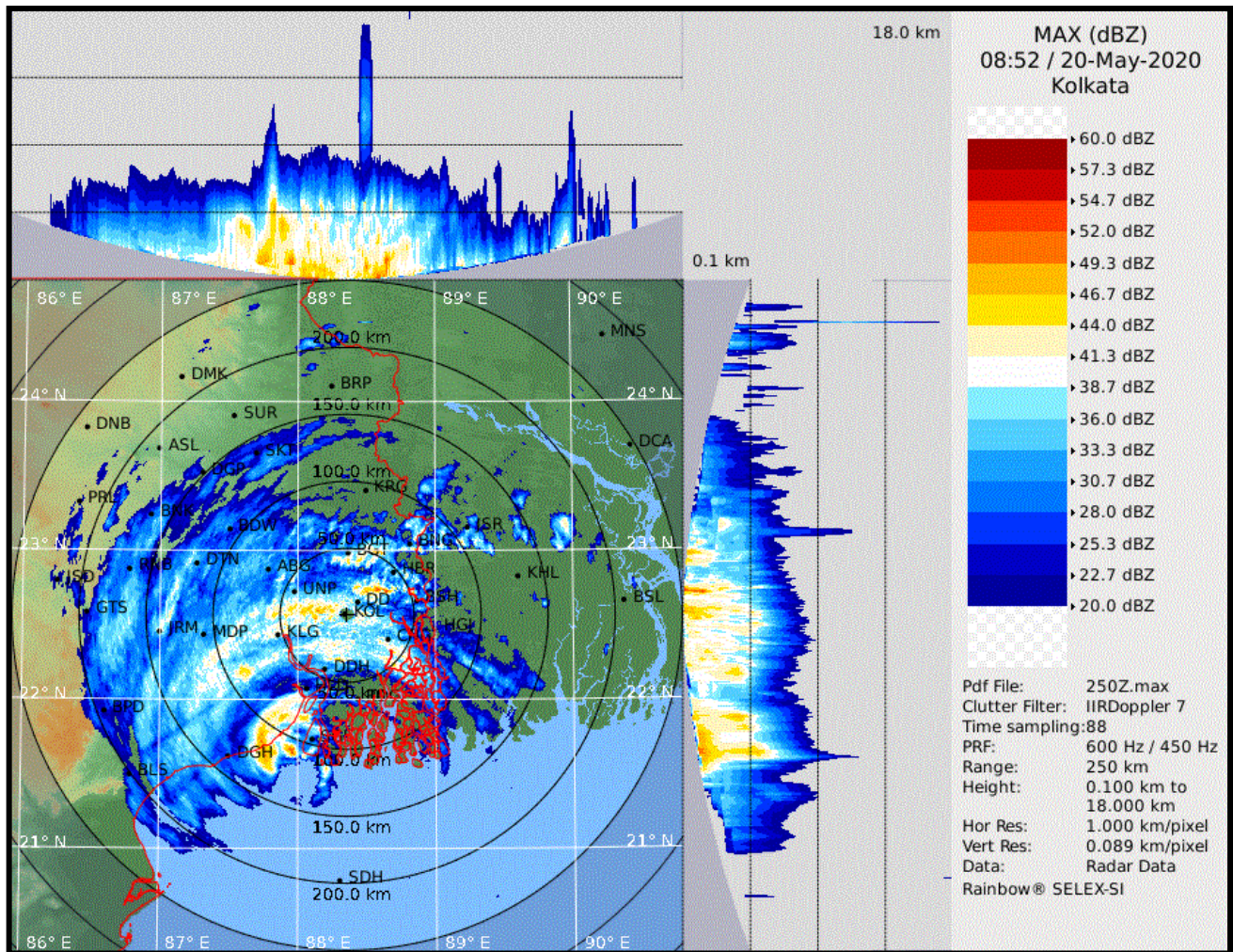
STORM SURGE HEIGHT INFORMATION:

* The below listed surge heights are over and above astronomical tide.

MANDAL/TALUK	DISTRICT	STATE / UNION TERRITORY	NEAREST PLACE OF HABITATION	* STORM SURGE (m)	* EXPECTED INUNDATION EXTENT (km)
Bhangar-I	South 24 Parganas	West Bengal	Bhangar-I	0.5-4.3	Around 17
Basirhat	North 24 Parganas	West Bengal	Basirhat	0.5-3.9	Around 10
Diamond Harbour	South 24 Parganas	West Bengal	Daimond Harbor	0.5-3.5	Around 17
Bagnan-II	Haora	West Bengal	Bagnan-II	0.5-1.0	Around 0.4
Mahisadal	Medhinipur	West Bengal	Tentul Berya	0.5-1.0	Around 0.4
Nandigram-I	Medhinipur	West Bengal	Nakchira Chara	0.5-0.8	Around 0.4
off Haldia	Purba Medhinipur	West Bengal	Nayachar Island	0.5-1.5	Around 0.5
Sutahata-I	Medinipur	West Bengal	Maniruddin Chara	0.5-1.6	Around 0.4
Sutahata-II	Medinipur	West Bengal	Haldia	0.5-1.5	Around 0.3
Digha	Purba Medhinipur	West Bengal	Digha	0.5-0.7	Around 0.3
Tamluk	East Midnapore	West Bengal	Tamluk	0.5-1.5	Around 0.3
Bhadrak	Bhadrak	Odisha	Mohanpur	0.5-1.1	Around 0.8
Kendrapara	Kendraparha	Odisha	Baligarh	0.5-0.8	Around 2.6
Baleshwar	Baleshwar	Odisha	Sahapur	0.5-0.7	Around 0.7

Spatial rainfall distribution: Isolated: <25%, A few: 26-50%, Many: 51-75%, Most: 76-100%
Rainfall amount (mm): Heavy rain: 64.5 – 115.5, Very heavy rain: 115.6 – 204.4, Extremely heavy rain: 204.5 or more.

Figure: Reflectivity of Kolkatta Doppler Weather Radar at 0852 UTC of 20th May 2020



Spatial rainfall distribution: Isolated: <25%, A few: 26-50%, Many: 51-75%, Most: 76-100%
Rainfall amount (mm): Heavy rain: 64.5 – 115.5, Very heavy rain: 115.6 – 204.4, Extremely heavy rain: 204.5 or more.